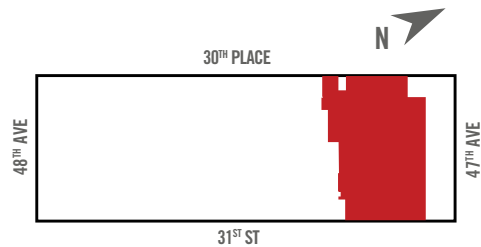


# SUITE 810

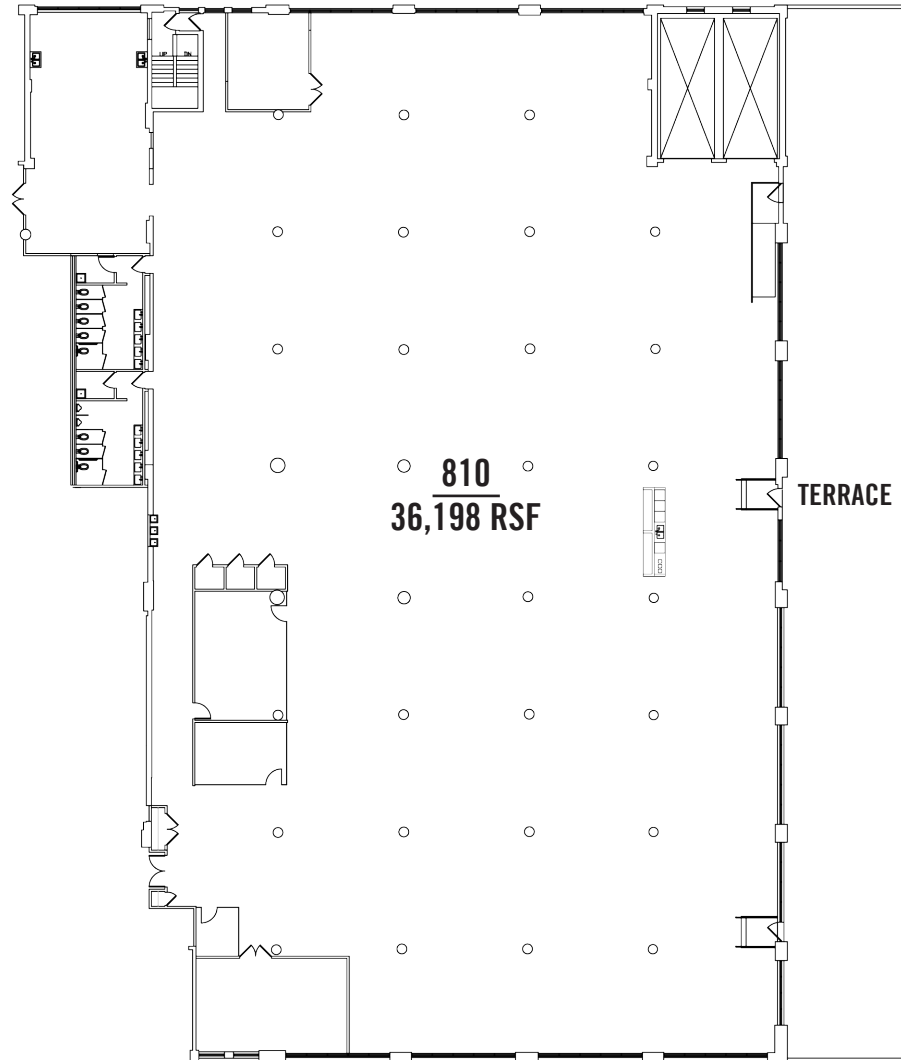
Work-Ready Prebuild

FLOOR: 8 AREA: 36,198 SF  
3,363 M<sup>2</sup>



## FEATURES:

- » WORK-READY LOFT SPACE
- » APPROX. 12' CEILINGS
- » APPROX. 22' COLUMN SPACING
- » INDOOR PARKING AVAILABLE
- » NEW FULLY FUNCTIONAL WINDOWS
- » 24H ACCESS AND SECURITY
- » FREIGHT ELEVATORS
- » SHUTTLE SERVICE TO SUBWAY & LIRR
- » RENOVATED LOBBY
- » NEW LOUNGE WITH VARIETY OF DINING OPTIONS
- » SECURE BIKE STORAGE
- » WIREScore GOLD CERTIFIED
- » TENANT CONTROLLED AC



30-30 47<sup>th</sup> Avenue  
Long Island City - NY, NY 11101

CONTACT:  
**212.372.2110**

Howard J. Kessler Jr.  
hkessler@ngkf.com

