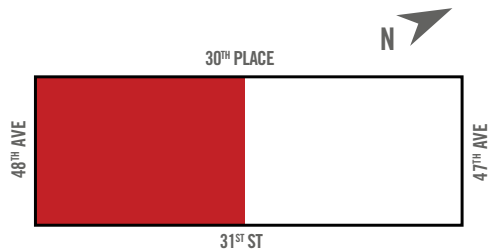


SUITE 800

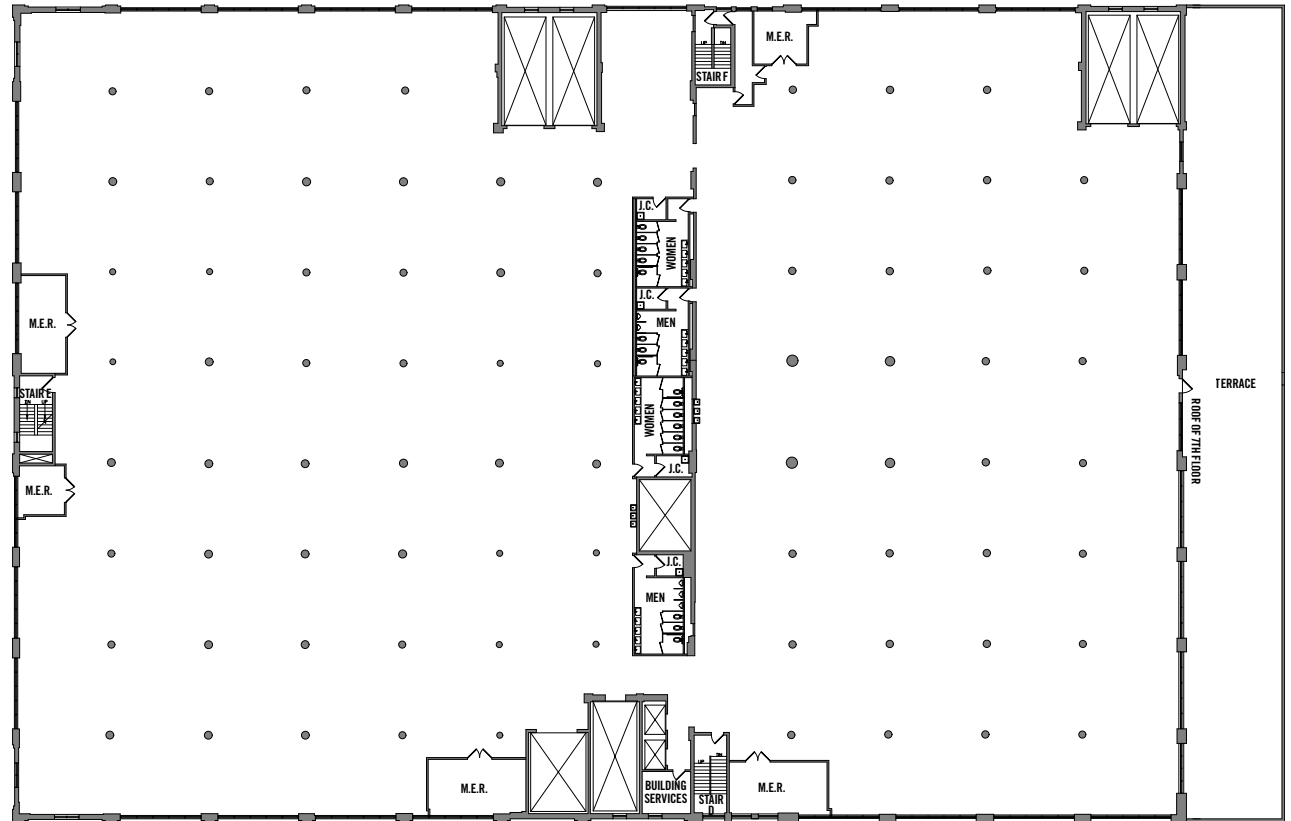
Entire Floor (potential to divide)

FLOOR: 8
AREA: 74,002 SF
6,875 M²



FEATURES:

- » FLEXIBLE OPEN PLAN
- » APPROX. 12' CEILINGS
- » APPROX. 22' COLUMN SPACING
- » INDOOR PARKING AVAILABLE
- » NEW FULLY FUNCTIONAL WINDOWS
- » 24H ACCESS AND SECURITY
- » FREIGHT ELEVATORS
- » SHUTTLE SERVICE TO SUBWAY & LIRR
- » RENOVATED LOBBY
- » NEW LOUNGE WITH VARIETY OF DINING OPTIONS
- » SECURE BIKE STORAGE
- » WIREScore GOLD CERTIFIED
- » TENANT CONTROLLED AC



30-30 47th Avenue
Long Island City - NY, NY 11101

CONTACT:
212.372.2110

Howard J. Kessler Jr.
hkessler@ngkf.com

