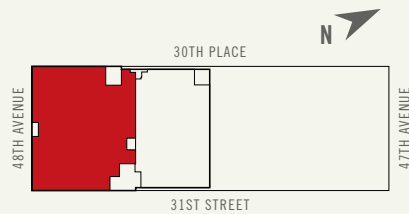


# SUITE 1020

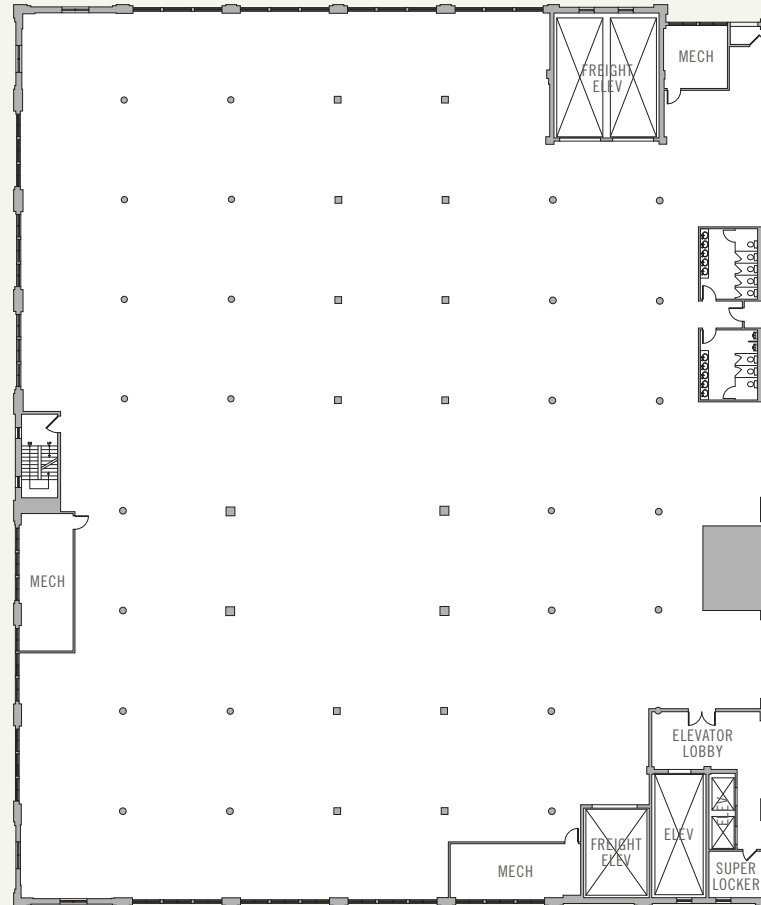
FLOOR: 10  
AREA: 42,237 SF  
3,924 M<sup>2</sup>



SCALE: 3/128"=1'-0"

## FEATURES:

- › Flexible, open floorplan
- › Approx. 12' ceilings
- › Approx. 22' column spacing
- › Indoor parking available
- › Renovated casement windows
- › 24h access and security
- › Freight elevators
- › Shuttle service to subway & LIRR
- › Renovated lobby
- › New planned lounge with variety of dining options
- › Secure bike storage



CONTACT:

**212.372.2110**

HOWARD J. KESSELER JR.  
hkessler@ngkf.com

ADDRESS:

30-30 47TH AVENUE · LONG ISLAND CITY · NEW YORK 11101

ADDITIONAL INFORMATION:

PROCURING BROKER SHALL ONLY BE ENTITLED TO A COMMISSION, CALCULATED IN ACCORDANCE WITH THE RATES APPROVED BY OUR PRINCIPAL ONLY IF SUCH PROCURING BROKER EXECUTES A BROKERAGE AGREEMENT ACCEPTABLE TO US AND OUR PRINCIPAL AND THE CONDITIONS AS SET FORTH IN THE BROKERAGE AGREEMENT ARE FULLY AND UNCONDITIONALLY SATISFIED. ALTHOUGH ALL INFORMATION FURNISHED REGARDING PROPERTY FOR SALE, RENTAL, OR FINANCING IS FROM SOURCES DEEMED RELIABLE, SUCH INFORMATION HAS NOT BEEN VERIFIED AND NO EXPRESS REPRESENTATION IS MADE NOR IS ANY TO BE IMPLIED AS TO THE ACCURACY THEREOF AND IT IS SUBMITTED SUBJECT TO ERRORS, OMISSIONS, CHANGE OF PRICE, RENTAL OR OTHER CONDITIONS, PRIOR SALE, LEASE OR FINANCING, OR WITHDRAWAL WITHOUT NOTICE AND TO ANY SPECIAL CONDITIONS IMPOSED BY OUR PRINCIPAL.